

EMPLOYMENT ENGAGEMENT

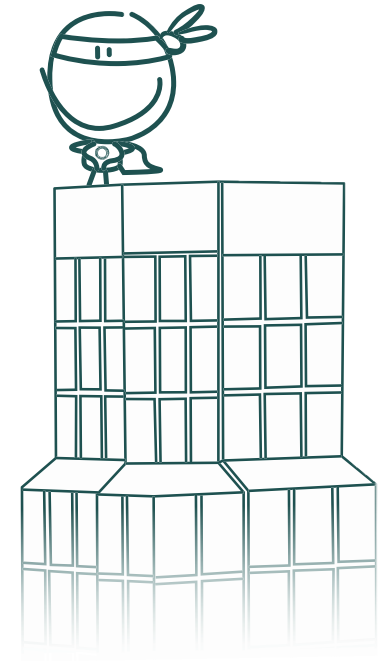
GETTING EVERYONE TO
WORK BETTER TOGETHER



CHALLENGE

GE Capital Solutions - Create
a tool box to reward leaders
and inspire new ones.

Listen. Act. Resolve and Share.
Better Together. LARS



CREATIVE

Global integrated toolbox to all internal managers championing LARS.



CREATIVE

Launch of internal microsite.

Targeted banner advertising.

LARS :) IS HERE

Deutsch **English** Español Français Italiano Nederlands Português Svenska

Listen:
Take the time to listen to and understand the needs of our customers.

Act:
Work collaboratively across functions to identify actions to meet the customer needs you have heard.

Resolve:
Execute on these actions to improve our customer experience with urgency and accountability.

Share:
Take the time to communicate employee and customer success stories across our business. [click to find out more](#)

It's coming. LARS :)

SE Capital Solutions Find out more at [www.ge.com/LARS](#) Better Together :)

It's the way we work. LARS :)

SE Capital Solutions Find out more at [www.ge.com/LARS](#) Better Together :)

It keeps our customers happy. LARS :)

SE Capital Solutions Find out more at [www.ge.com/LARS](#) Better Together :)

05.10.07 :)

SE Capital Solutions Find out more at [www.ge.com/LARS](#) Better Together :)